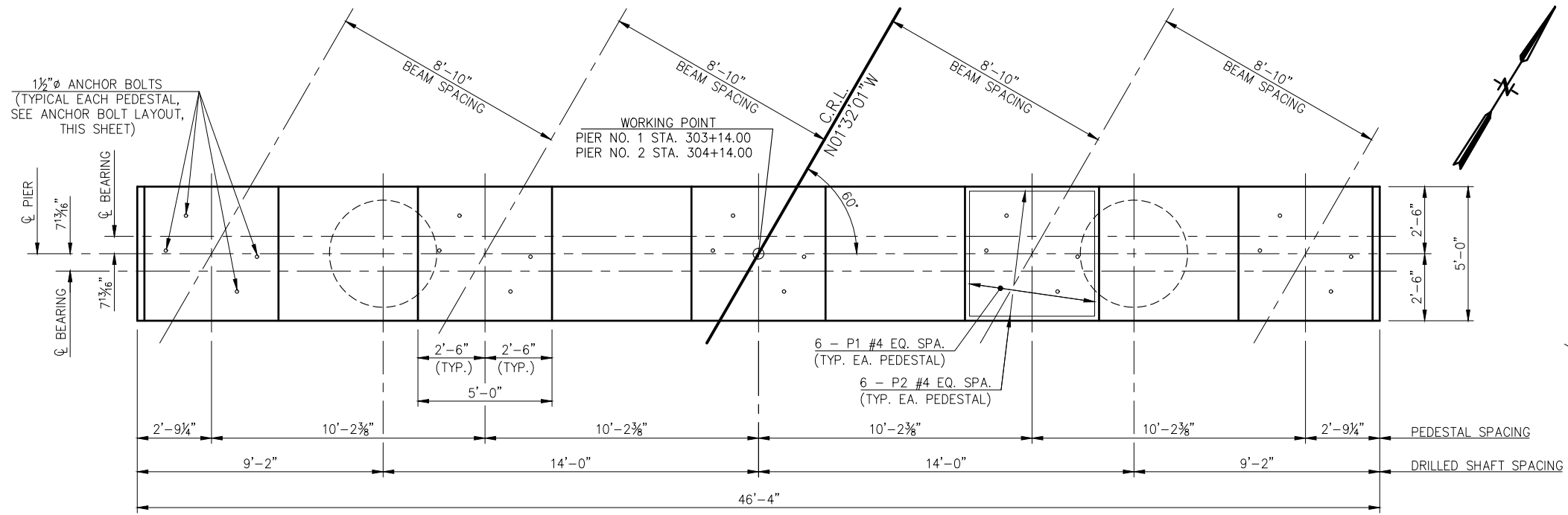
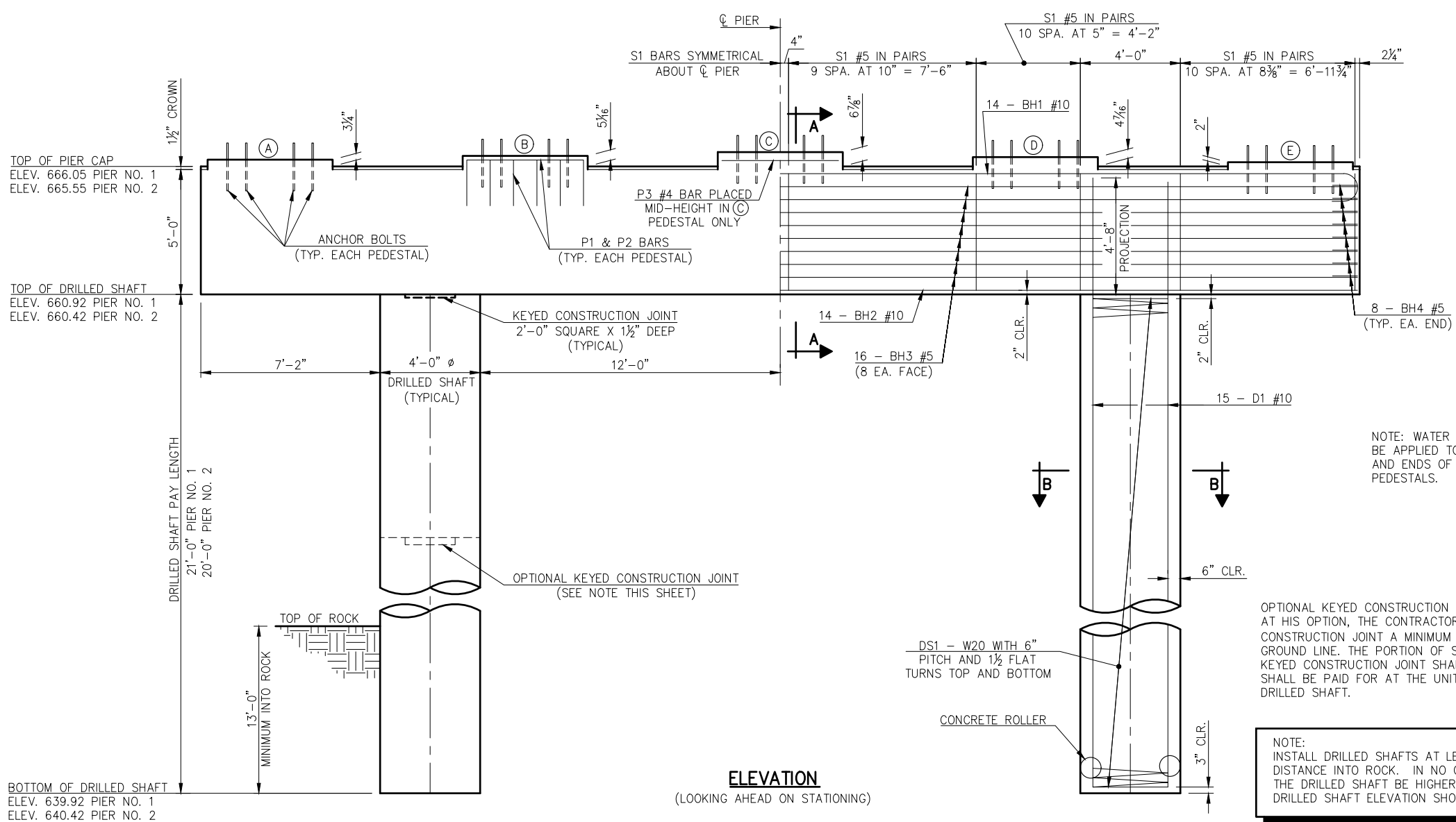
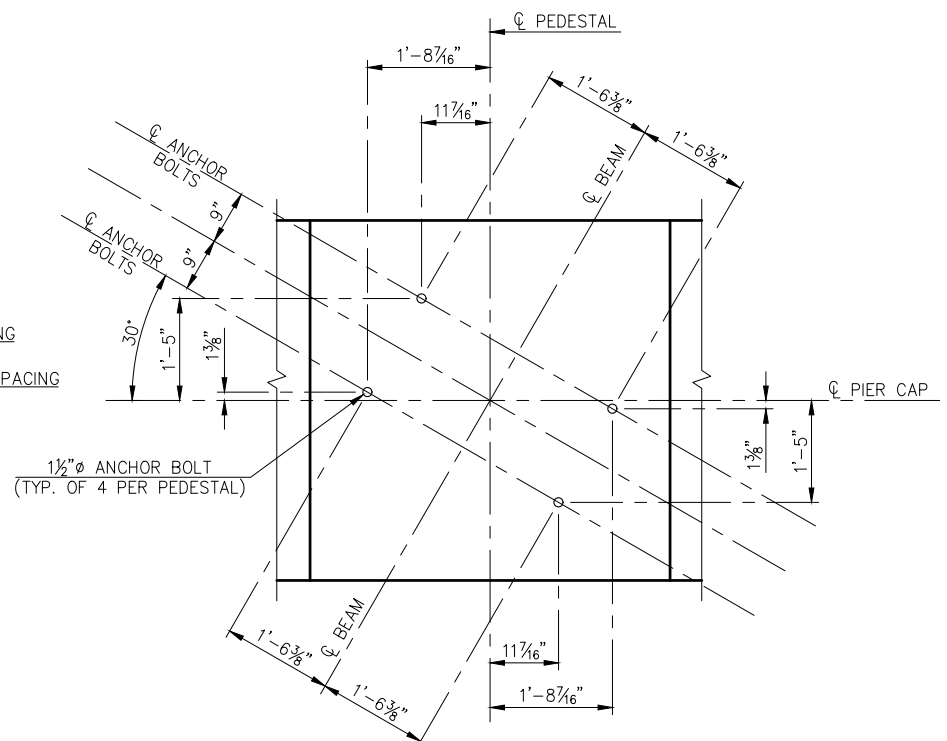


REVISIONS		
REV. NO.	DESCRIPTION	DATE



PLAN



ELEVATION
(LOOKING AHEAD ON STATIONING)

PIER NO.	A	B	C	D	E
1	666.31	666.47	666.62	666.41	666.21
2	665.81	665.97	666.12	665.91	665.71

ITEM	UNIT	PIER NO. 1	PIER NO. 2	TOTAL
CLASS A CONCRETE	C.Y.	45.40	45.40	90.80
EPOXY COATED REINFORCING STEEL	LB.	9,010.00	9,010.00	18,020.00
WATER REPELLENT (VISUALLY INSPECTED)	S.Y.	89.00	89.00	178.00
DRILLED SHAFTS 48" DIAMETER	L.F.	42.00	40.00	82.00
CROSSHOLE SONIC LOGGING	EA.	-	-	1.00

NOTE:
INSTALL DRILLED SHAFTS AT LEAST THE SPECIFIED MINIMUM DISTANCE INTO ROCK. IN NO CASE SHALL THE BOTTOM OF THE DRILLED SHAFT BE HIGHER THAN THE BOTTOM OF DRILLED SHAFT ELEVATION SHOWN IN THE PLANS.

DESIGN	MBS	2/15	SH-28 OVER SALT CREEK	NOWATA COUNTY
DETAIL	SLP	2/15	BRIDGE "A"	
CHECK	MBS	3/15		
GUY ENGINEERING SERVICES, INC.			STATE JOB PIECE NO. 28857(04)	SHEET NO. B016

DETAILS OF PIERS
(SHEET NO. 1 OF 2)

Monday, July 31, 2017 4:16:15 PM
V:\12-716E SH-28 Salt Creek JP 28857\STRUCTURAL\DWG\Salt Creek - PIERS.dwg